



AIGIRI



www.aigirijewels.com

A guide to a perfect size

Measuring Guide for Rings



A. Measure a Ring You Already Own

- Identify the finger you want to wear the ring on.
- Select a ring that fits comfortably on that finger.
- Use a ruler to measure the ring's inner diameter in millimeters.
- Match your measurement with our precision chart below.
- For the most accurate sizing, refer to our detailed scale

If you want the accurate size, refer to this scale. Use a ruler to ensure the printed sample on the right is exactly 40mm. To do this, make sure your print settings are not set to scale or shrink.

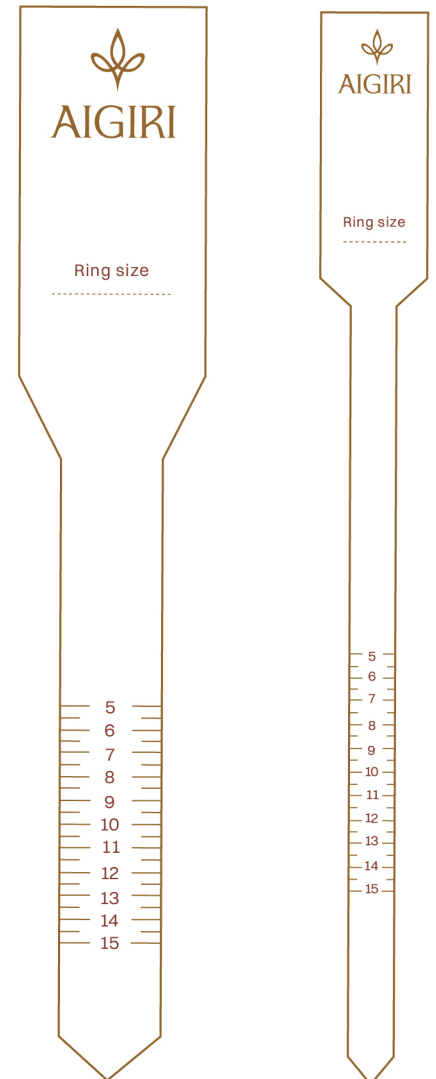
		5 14.33 mm	6 14.65 mm
7 14.97 mm	8 15.29 mm	9 15.61 mm	10 15.92 mm
11 16.24 mm	12 16.56 mm	13 16.88 mm	14 17.2 mm
15 17.52 mm	16 17.83 mm	17 18.15 mm	18 18.47 mm
19 18.79 mm	20 19.11 mm	21 19.43 mm	22 19.75 mm
23 20.0 mm	24 20.06 mm	25 20.6 mm	26 21.02 mm
27 21.34 mm	28 21.6 mm	29 21.97 mm	30 22.29 mm



AIGIRI

B. The Aigiri Experience: Using Our Signature Ring Scaler

- Download and print the exclusive Aigiri Ring Scaler.
- Cut carefully along the dotted lines.
- Wrap the scaler around your chosen finger with the numbers facing outward.
- Adjust it to achieve a snug yet comfortable fit.
- Repeat the process three times to ensure complete accuracy.



C. The Aigiri Touch: Our Bespoke Ribbon Method

- Choose a fine ribbon that complements the elegance of the Aigiri experience.
- Carefully wrap it around the base of your finger.
- Mark the point where the ends meet with precision.
- Match the measurement to our sizing chart.
- Verify the result for a flawless fit.



International Conversion Chart



Diameter (mm)	Circumference (mm)	India	Europe	UK, Australia & South Africa	US & Canada
14.33	44.90	5	45	G	
14.5				G ½	3½
14.65	45.90	6	46	H	
14.97	47.10	7	47	H ½	4
15.1				I	
15.29	48.10	8	48	I ½	4½
15.5				J	
15.61	49.00	9	49	J ½	5
15.92	50.00	10	50	K	
16.1				K ½	5½
16.24	50.90	11	51	L	
16.56	51.80	12	52	L ½	6
16.7				M	
16.88	52.80	13	53	M ½	6½
17.1				N	
17.2	54.00	14	54	N ½	7
17.52	55.00	15	55	O	
17.7				O ½	7½
17.83	55.90	16	56	P	
18.15	56.90	17	57	P ½	8
18.3				Q	
18.47	57.80	18	58	Q ½	8½
18.79	59.10	19	59	R	
19.0				R ½	9
19.11	60.00	20	60	S	
19.43	60.90	21	61	S ½	9½
19.6				T	
19.75	61.90	22	62	T ½	10
20.0	62.80	23		U	
20.06	63.80	24	63	U ½	10½
20.38			64	V	
20.6	64.70	25		V ½	11
20.70			65	W	
21.02	66.00	26	66	W ½	11½
21.2				X	
21.34	66.90	27	67	X ½	12
21.6	67.90	28		Y	
21.66			68	Z	12½
21.97	69.10	29	69	Z ½	
22.29	70.10	30	70		13

A Measuring Guide for Bracelets & Bangles

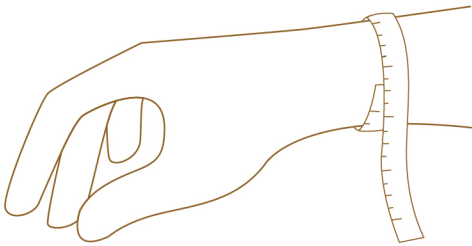
Unsure about your size?

Here are two simple methods to measure your wrist and find the perfect fit using our conversion chart.

Step 1: Measure Your Wrist

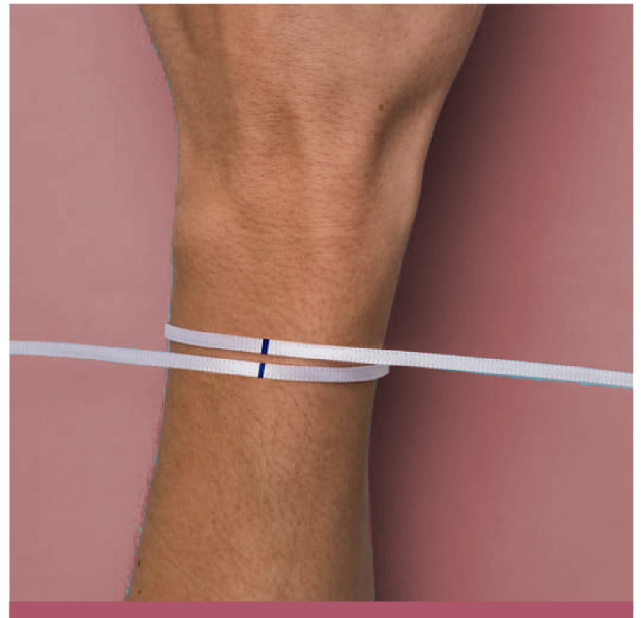
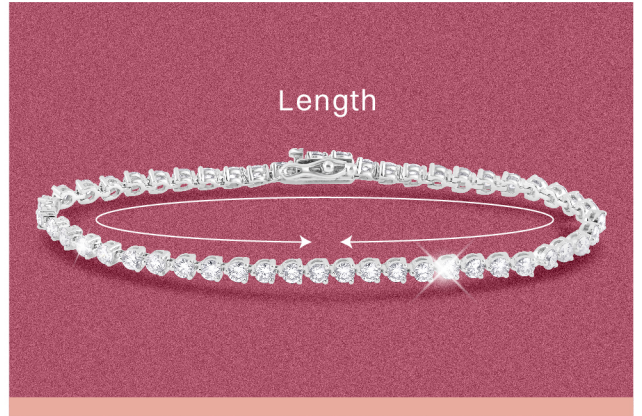
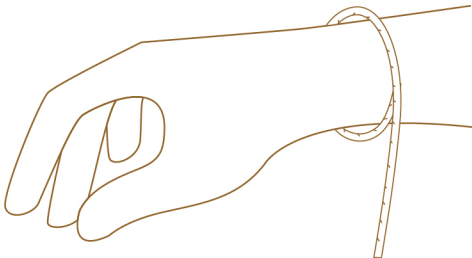
A. Precision Method: Measuring Tape

- Wrap a measuring tape snugly around your wrist, just above the wrist bone.
- Carefully record the measurement.



B. Artisan's Approach: String Technique

- Use a fine string to wrap around your wrist, just above the wrist bone.
- Mark the point where the ends meet with precision.
- Lay the string flat and measure its length.



Step 2: Find Your Perfect Fit

Match your measurement to our curated conversion chart to discover the perfect size for your Aigiri jewelry. Whether it's a bracelet or a bangle, your ideal fit is just a step away.

Bracelet	
Diameter (in)	Bracelet Size
6.0	60
6.5	65
7.0	70
7.5	75
8.0	80

Oval Bracelet & Bangles		
Anna	Diameter (mm)	Bangle Size
2-2	54.00	202
2-4	57.20	204
2-6	60.30	206
2-8	63.50	208
2-10	66.70	210
2-12	69.90	212
2-14	73.00	214
3-00	76.20	300

